

The State of Arkansas

2020

Total of listed Types and Towns: 288



2nd class mail box-roller 4.4613



Automated mail with HS 2.6257

The normal state abbrev is ARK, unless listed (ie: AR)

The following are illustrations of Types with PIC Note in the listing.



1.2250001 poss integral with Postmaster's name



0.7673 single subj HS



7.76446 VLR



7.7644 VLR



7.8644 SLR



2.46446



2.425



2.6*28



1.162401



ST n/p (no zip) 2.46

AR

The following are illustrations of Arkansas Towns with Type Numbers.



1.1283 CON heavy impr

1.1642

1.166354



1.1673

1.2643

1.4644



2.4182 CON

2.4214

2.425

2.4284



2.4294

2.46

2.46 CON

2.466454 mix font



State abbrev AR 2.460005

2.4614

2.46(14/94)

2.4644



AR



2.467005

2.528

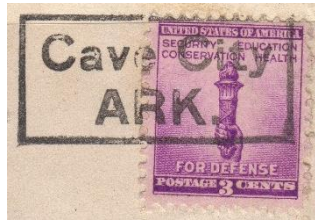
2.529



2.56



2.5644



2.625

2.64(5/9)



2.669



4.4213

4.4253

4.4273



4.44(53/73)

4.4614 and another example

4.464201



4.5643

4.6254

4.6643

ARKANSAS

2020

Type	Note	Town	Note	Usage
2.466404		ALMYRA,		1938
2.466454		ALMYRA,		1938
1.461008		ALMYRA, AR. / ZIP		1954
1.2664		ALTUS,		1913
2.46		AMITY		1938
2.466		AMITY		1926
2.429		AMITY,		1925SD
2.4543		ARKANSAS CITY		1938
1.4644		ASHDOWN,		1922, 26
2.46	CON	ATKINS,		1938
4.4254		ATKINS		1932
4.4644		ATKINS		1926
2.46		AUGUSTA,		1954
2.425		BALD KNOB		1926
2.46		BALD KNOB		1926
4.4254		BEARDEN		1922
4.4274		BEARDEN		1922
2.425		BEARDEN,		1917
4.4263		BEEBE		1917, 22, 23
1.1643		BELLEVILLE,		1940
2.4643		BENTON		1917, 22
2.4664		BENTON,		1926
2.465		BERRYVILLE	CQ	1926
2.66		BERRYVILLE		1940
2.4663		BOONEVILLE	CQ	1938
1.156354		BRADLEY,		1954
2.425		BRINKLEY		1922, 32, 38
2.64(54/64)		BRINKLEY		1938, 54
2.46		BRINKLEY,		1914, 17
1.225001	PIC	BROCKWELL,		1926
2.426		CABOT,		1926
2.46	CON	CABOT,		1954
2.4244		CALICO ROCK		1926, 38
2.46		CALICO ROCK		1954
2.46		CARLISLE,		1922
2.666		CARLISLE		1938
2.46		CASH,		1938
2.666		CAVE CITY		1940
2.461		CENTER RIDGE,		1954, 64
2.4214		CHARLESTON		1926, 31
2.4243		CHARLESTON,		1938

2.4644		CLARENDON	CQ	1954
2.4663		CLARENDON		1938
2.64(5/6)		CLARENDON		1938
2.4654		CLARENDON,		1930, 31, 38, 55
2.4614		CLARKSVILLE		1922
2.46		CLINTON,		1937
2.460005		CLINTON / AR	CQ	1971
1.425251		COAL HILL,		1922
2.46		CORNING		1940
2.4263		CROSSETT		1923, 26
2.4243		CULLENDALE		1938
2.4674		DELIGHT,		1932
4.42(53/63)		DE QUEEN		1917, 18, 22BH
7.4643		DE QUEEN		1922, 26, 32, 38
7.4643	CON	DE QUEEN		1926, 38, 40
2.666		DE WITT		1938
2.625		DE WITT,	SMe	1938
2.46		DE WITT,		1938
2.466454		DE WITT,		1938
2.4263		DE WITT,	SMe	1922
2.460005		DE WITT, / AR		1968
2.46		DELAPLAINE,		1963
2.465		DELAWARE,		1923
2.46		DEWITT,	SMe	1961
1.1644	CON	DIERKS,		1954
2.46002		DUMAS		1917
2.4264		DUMAS,		1917
2.64(5/9)		EARLE,		1954
2.46532		EARLE,		1931D, 36
0.7673	PIC	EL / DORADO / ARK.		1918, 19, 22-27, 32
2.4644		EL DORADO,		1914
2.46	CON	ELKINS,		1954
2.4293		EMMET		1938
0.4643		EUDORA		1917, 22
2.4283		EUDORA		1926
4.4274		EUDORA		1922
2.46(1/9)		EUREKA SPRINGS		1931D, 38, 59D
2.461		EUREKA SPRINGS		1923, 32, 38
2.561		EUREKA SPRINGS		1926, 38
2.425		EVENING SHADE,		1917
2.66		FAYETTEVILLE		1912
2.528		FORDYCE	CQ	1914
2.4243		FORREST CITY		1931D, 38
2.4614		FORREST CITY		1926, 32

1.2644		FORT SMITH,	1914SD
2.46		GASSVILLE,	1966
2.4283		GENTRY	CQ 1926
2.46		GENTRY	1926
2.464405		GILBERT, / AR	1931D
1.2643		GLENWOOD,	1922, 23, 26, 32-34, 38, 40
2.529		GRADY	1922
2.46		GREEN FOREST,	1954
2.425		GREENWOOD	1917
2.4214		GREENWOOD,	1923, 26, 32
2.46		HAMBURG	1922
2.44(5/9)		HARDY	1938
2.666		HARRIET	1926
2.466454		HARRISBURG,	1938
2.46		HARRISON,	1917, 26, 38
2.466454		HARRISON	1957
4.46444		HARRISON,	1917
1.4543		HARTFORD	1938
2.46		HARTFORD,	1926, 35
2.4653		HAZEN,	1931D, 38
2.625		HEBER SPRINGS	1938
2.4243		HEBER SPRINGS,	1938
2.4283	CON	HEBER SPRINGS,	1938, 40
2.4294		HOPE,	1908
2.46632		HOPE	1926
2.4664		HOPE	1931D
0.4643		HORATIO	1921
2.46		HORATIO,	1938
5.6543		[HOT SPRINGS /NATIONAL PARK] [ARKANSAS]	1922, 23
5.4614		[HOT SPRINGS / NATIONAL PARK] [ARK.]	1931
4.4614		HOT SPRINGS NA- / TIONAL PARK, ARK.	1922, 23, 25SD, 26, 32
2.460005	CON	HOT SPGS. NAT'L. / PARK, AR	1978
2.4613		HOT SPRINGS,	1917
0.46		HUGHES,	1938
2.4294		HUTTIG,	1914
1.264451		JESSIEVILLE,	1932
1.1614		JONESBORO	1926
4.4243		JONESBORO	1923, 26, 32
4.4613		JONESBORO	1926
2.46		JUDSONIA	1914, 26
2.666		JUDSONIA	1938
4.4254		JUDSONIA	1917D, 22
1.1672		JUDSONIA,	1954, 59D, 63, 68
2.4653		JUDSONIA,	1938

2.460005		JUDSONIA, / AR		1954
2.466454		KENSETT,		1938
2.4264		KNOBEL		1938
2.46		KNOBEL,		1954
2.666		LAKE CITY		1938
2.42		LAKE VILLAGE		1940
2.66		LAKE VILLAGE		1917
2.4242		LAKE VILLAGE,		1954, 61
4.4254		LAMAR		1922
2.666		LEACHVILLE		1938
2.4243		LEWISVILLE		1926
1.1643		LINCOLN,		1938
1.1663		LINCOLN,		1940
2.46		LINCOLN	CQ	1964
2.465		LINCOLN,		1926
4.46134		LITTLE ROCK,		1918, 21, 22, 25, 26
7.7644	VLR, PIC	LITTLE / ROCK / ARK.		1917, 17SD
7.76446	VLR, PIC	LITTLE / ROCK, / (ARK.)		1917
4.464301		LITTLE ROCK		1914, 16, 17
4.4613		LITTLE ROCK,		1917D-18,22-23,26,31D,32
4.4213		LITTLE ROCK,		1922, 23, 26
4.4254		LITTLE ROCK		1917D
4.464201		LITTLE ROCK,		1917D, 22
4.5643		LITTLE ROCK,		1922, 23
4.6643		LITTLE ROCK,		1922
7.8644	SLR, PIC	LITTLE ROCK, ARK.		1917
0.4662		LONOKE		1921
4.4254		LONOKE		1922
2.461		MAGNOLIA,		1908
2.4663		MAGNOLIA,		1938
2.46		MALVERN,		1926, 32, 33, 38, 40
1.1643		MARIANNA,		1938, 54, 62
0.221401		MARIANNA,		1941A
2.42		MARKED TREE		1932
2.4283		MARKED TREE,		1938
2.46006	PIC	MARKED TREE		1938
2.64(5/6)		MARKED TREE		1940
2.4643		MARMADUKE		1926
4.6253		MARMADUKE		1922
2.467405		MARMADUKE, / AR		1963
2.460005		MARSHALL, / AR		1968
2.465		MARSHALL,		1938
2.4263		MARVELL,		1926
2.460005	CON	MARVELL, / AR	CQ	1968

2.46		MC CRORY,		1938
2.46	CON	MCCRORY,	SMc	1954
2.4254	PIC	MC GEHEE,		1917, 22
1.46		MCGEHEE,	SMc	1922
2.5664		MCCEHEE,		1926
4.4263		MENA,		1922, 26, 30
4.4274		MONETTE		1932
4.4644		MONETTE	CQ	1938
2.56		MORRILLTON,		1912
2.465		MORRILLTON,		1923, 26
2.425		MOUNT IDA		1923
2.46		MOUNT IDA,		1926
2.625		MOUNTAINBURG		1957
2.4643		MOUNTAINBURG,		1938
2.425		MULBERRY,		1922
2.425		NASHVILLE		1917
1.1664		NASHVILLE, ARK.		1922
2.466		NEWARK		1938
2.4663		NORPHLET,		1926, 32
4.4614		NORTH / LITTLE ROCK, ARK.		1922, 25SD, 26, 32
4.5643		NORTH LITTLE ROCK		1922
2.467005		OMAHA, / AR		1959D
4.4273		OSCEOLA		1917, 22
2.4293		OSCEOLA,		1931
2.46		OSCEOLA		1922, 26, 38
2.625		OSCEOLA		1938
2.46		OSCEOLA,		1938
2.4664		OZARK		1922BH
2.46	CON	OZONE,		1968
2.46		PARAGOULD	CQ	1912
2.4644		PARAGOULD,		1908
2.4674		PARIS,		1917
2.425		PARKDALE,		1922
2.46		PIGGOTT	CQ	1917
2.4653		PIGGOTT,		1938
2.469		PIGGOTT,		1931, 36, 38, 40
2.461		PINE BLUFF	CQ	1912, 14
1.4644		PINE BLUFF,		1913,17,22-3,25,25SD,26
1.5114		PINE BLUFF,		1912,14,17,17DOC,SD,18
1.51736		PINE BLUFF,		1912, 14, 17
2.4644		PINE BLUFF,		1913
2.46		PLAINVIEW		1922
2.4614		PRAIRIE GROVE,		1926
2.56	CON	PRAIRIE GROVE,		1938, 50

7.4643		PRESCOTT	1926
2.46		RATCLIFF	1954
2.46	CON	RECTOR,	1950
2.466		RECTOR,	1928, 38
2.6*28	PIC	RISON	1917
2.46	CON	RISON,	1938, 58
2.5294		RISON,	1922
2.4674		ROGERS	CQ 1908, 14
1.1292		ROMANCE,	1940
1.162401	PIC	RYAN,	1917
2.46		SAINT JOE,	1954
1.1253		SCOTLAND,	1938
2.4293		SCOTT	1938
1.1644		SCOTT,	1954
2.46		SCOTT,	1954
2.4263		SHERIDAN	1926
2.666		SHERIDAN	1950
2.4263		SHIRLEY,	1926, 38
2.46		SHIRLEY,	1932
2.460005		SIMS, / AR	1963
2.46		SMACKOVER	CQ 1931, 32, 40
2.46	CON	SMACKOVER,	1954
2.4214		SPRINGDALE,	1932
2.4243		SPRINGDALE,	1938
2.4263		SPRINGDALE,	1926, 38, 40
2.44(5/6)		STAMPS	1938, 54
2.46	CON	STAMPS,	1954
1.1283		STAMPS,	1913
2.4214		STUTTGART	1926
2.64(5/6)		SUBIACO	1954
0.4644	CON	SUBIACO	1938
2.669		SUBIACO	1938
2.62		SULPHUR SPRINGS	CQ 1917
2.466454		SWIFTON	1954
2.4293		SWIFTON	1932, 36
2.46		THORNTON,	1932
2.46		TRUMANN	1938
2.625		TRUMANN	1938, 54
2.4663		TRUMANN,	1926, 32, 34
2.6257		TUCKERMAN	1964
2.4654		TUCKERMAN,	1923, 26
2.4263		TUCKERMAN	1926
1.1643		VAN BUREN,	1917
2.45		VILONIA,	1932

2.46	CON	VILONIA,		1959D, 61
7.4643	DLR	VILONIA		1917, 22, 26, 32
2.461		WALNUT RIDGE	CQ	192
2.4643		WALNUT RIDGE		1926, 32, 33
2.56		WALNUT RIDGE		1931D
4.4274		WARREN		1922
7.4643		WARREN		1922, 23, 26
2.425	CON	WEBB CITY	CQ	1940
2.425		WEINER,		1922
2.4243		WEST MEMPHIS,		1926, 32
2.460005		WESTERN GROVE / AR		1968
2.4263		WHEATLEY,		1938
2.46		WHEATLEY	CQ	1938
2.46		WHEETLEY		1922
7.4643	DLR	WHEETLEY		1917
2.46	PIC	WHELEN SPRINGS, / AR		1954
2.466		WILMAR		1922
2.46		WILMOT		1922
1.5273		WINSLOW,		1938
2.46	CON	WINSLOW,		1954
2.4644		WYNNE,		1938
2.469		WYNNE		1938
2.4264		WYNNE		1917
2.4293		WYNNE,		1932
2.46	CON	WYNNE,		1954
1.1663		YELLVILLE		1938